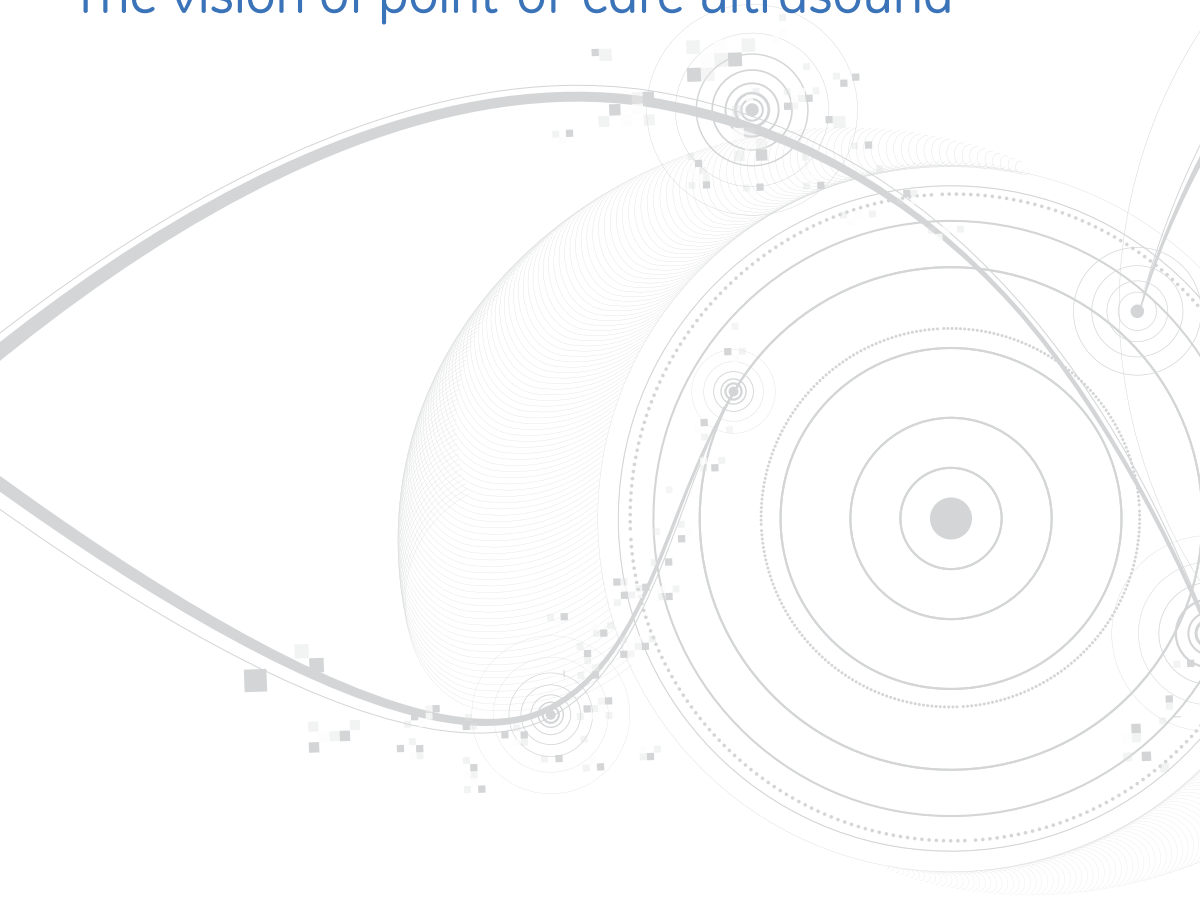


GE Healthcare

# Venue

The vision of point-of-care ultrasound



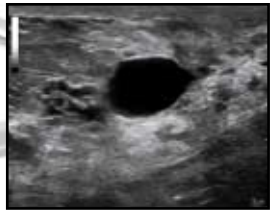
No one thought TVs would be  
in every room either.

Say hello to Venue™, a simple yet sophisticated  
technology that puts the power of ultrasound in the  
hands of clinicians at the point of care. We listened  
to your needs. We built it to empower you. We made  
it affordable. Imagine the possibilities.

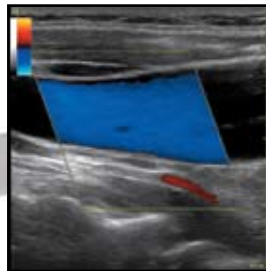


## It's a different way to view ultrasound.

You wouldn't expect this image quality in a system this compact. Combine fast, high-resolution imaging with a large image-to-screen proportion and you have the tools to make rapid diagnoses, accurately guide needles and view anatomy with exceptional resolution. It's another tool to help improve patient outcomes.



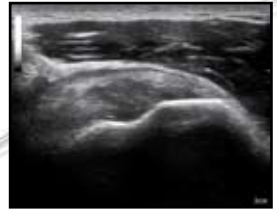
Interventional



Vascular Access



Anesthesia



Musculoskeletal



Point of Care



**It's technologically designed to be easy to use.**

The GE Venue 40 has intuitive, pre-configured application settings and an easy-to-use touch interface. There are no buttons, no keyboard, no knobs to complicate the process or slow you down. Just gel and go.

**It goes where you need to go.**

The Venue 40 is sleek and can be wheeled into tight spaces like the bedside or trauma bay. With a quick boot up time, it can be ready to scan in the time it takes to put your gloves on. And a universal docking system makes it possible to mount it in a cart or a table dock without the need for tools, making it easy to take from room to room or location to location. Simply pop and go.





**A smooth, single-surface screen. Germs will have to find a new place to hide.**

You wanted an easy-to-clean ultrasound. You got it. Venue features a single-surface screen without seams, buttons, keyboard or a monitor frame that could potentially trap contaminants. A probe connection, flush with the system, further reduces the places germs can hide. Plus, its transparent, durable cover withstands medical disinfectants and everyday wear and tear, making it easier to clean. Just clean and go.

**Save. Transfer. Recall. Print. It's that easy.**

Simply plug and play. The Venue 40 offers recording, archiving, recall, file transfer and printing capabilities. Its flexible archiving means you'll never have to leave your images in the machine. You can connect and transfer directly to a computer (PC or Mac) or save to SD Card or USB flash drive. Quickly save and transfer your images as JPEG or MP4 files. Or, use the DVI port to display them live on an external monitor.



SD Card



USB ports  
DVI port



Printer  
ready



## Built with many options, so you can build it to be your own.

The Venue 40 gives one overriding benefit that every medical professional can benefit from – confidence. That comes from clearly seeing a vessel or anatomical structures in real time. And with multiple software applications, you choose how to meet your specific needs. Confidently.

### Vascular Access

Place peripheral or central lines with exceptional visualization of anatomy and needle, right at the bedside.

### Anesthesia

Increase precision and confidence with clear anatomy and needle visualization.

### Interventional

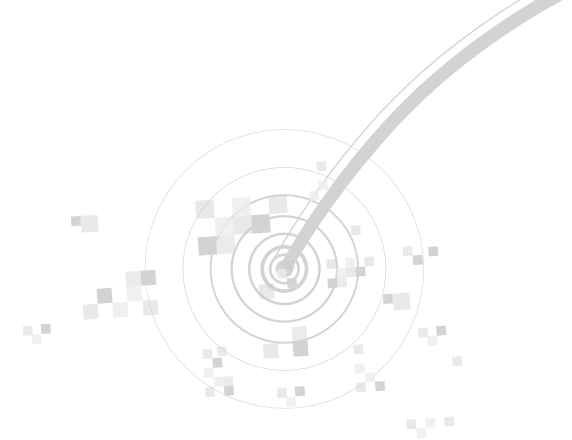
Biopsy guidance, line placements and rapid diagnostics just got easier.

### Musculoskeletal

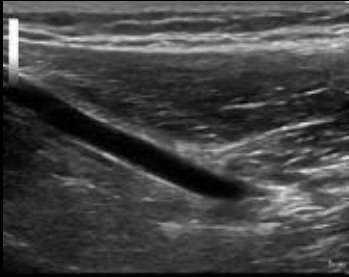
See your way to more accurate diagnosis and treatment whether you're in a hospital, office or training room.

### Point of Care

For rapid diagnosis and cardiac assessment in the ICU, trauma bay or at the bedside.



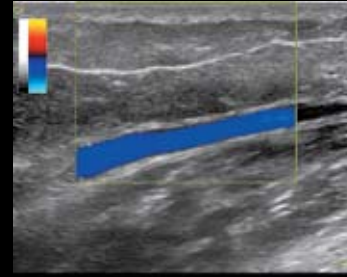
Vascular Access



Anesthesia



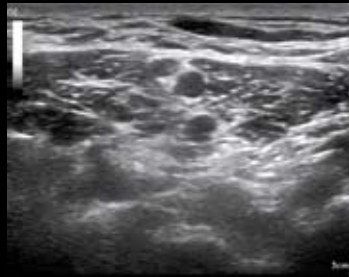
Interventional



Brachial Vein



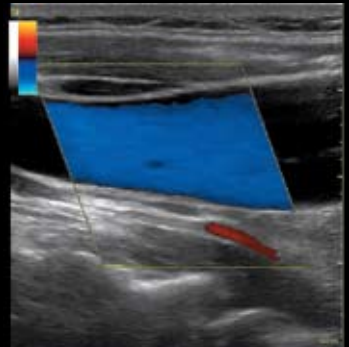
Median Nerve



Varicose Vein



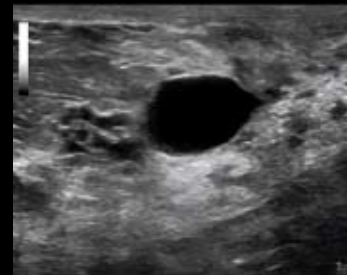
Femoral Artery



Brachial Plexus Nerve



Thyroid Nodule



Internal Jugular



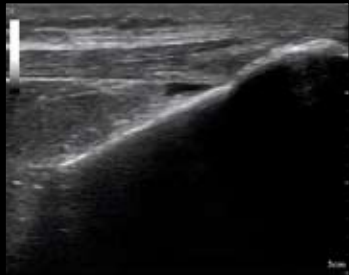
Median Nerve Surrounded by Anesthetic



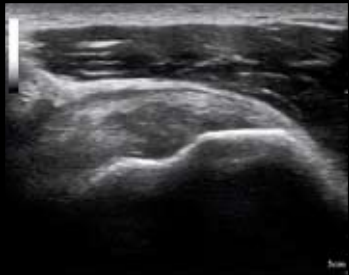
Breast Cyst



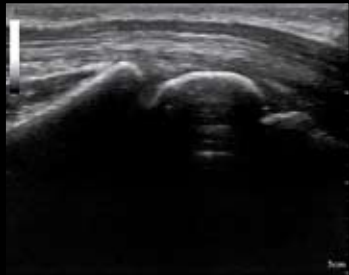
## Musculoskeletal



Patellar Tendon



Supraspinatus Tendon



MCP Joint

## Point of Care



Parasternal Long Axis Heart



Morison's Pouch



Jugular Vein





©2009 General Electric Company – All rights reserved.

General Electric Company reserves the right to make changes in specifications and features shown herein, or discontinue the product described at any time without notice or obligation. Contact your GE Representative for the most current information.

GE, GE Monogram, Venue and CrossXBeam are trademarks of General Electric Company.

## Healthcare Re-imagined.

GE is dedicated to helping you transform healthcare delivery by driving critical breakthroughs in biology and technology. Our expertise in medical imaging and information technologies, medical diagnostics, patient monitoring systems, drug discovery, and biopharmaceutical manufacturing technologies is enabling healthcare professionals around the world to discover new ways to predict, diagnose and treat disease earlier. We call this model of care, "Early Health." The goal: to help clinicians detect disease earlier, access more information and intervene earlier with more targeted treatments, so they can help their patients live their lives to the fullest. Re-think, Re-discover, Re-invent, Re-imagine.

GE Healthcare  
9900 Innovation Drive  
Wauwatosa, WI 53226  
U.S.A.  
888 526 5144  
[www.venue.gehealthcare.com](http://www.venue.gehealthcare.com)



imagination at work

ULTP-0473-08.09-EN-US